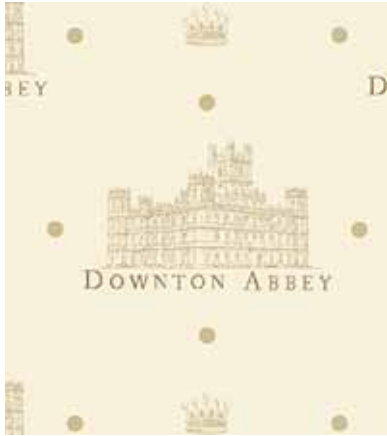


Downton Abbey®



FABRICS BY **KATHY HALL**

Quilt sewn by Barbara Lethbridge



Violet's Quilt
Quilt Design:
Heidi Pridemore

Quilt Size: 64" x 82" (1,62 x

andoverfabrics.com



About Downton Abbey®

Bold and elegant, like the Dowager herself, this collection of fabrics is punctuated by prints and paisleys as big as her presence. The gray, purple, and black colors come straight from her wardrobe, and the patterns speak to her undeniable flair, steeped in refined tradition.

Downton™ and Downton Abbey®, ©2013
Carnival Film & Television Limited, All Rights Reserved.

makower uk
The Henley Studio

118 Greys Road, Henley-on-Thames, Oxon RG9 1QW.

Tel: +44(0)1491 579727

e-mail info@makoweruk.com www.makoweruk.com

andover

Violet's Quilt

Introducing Andover Fabrics new Collection: Downton Abbey by Kathy Hall
Quilt designed by Heidi Pridemore

Quilt finished 64" x 82"

This quilt design embraces Violet Crawley, Downton Abbey's Dowager Countess of Grantham's personality with its dignified appearance and timeless elegance. The blocks may look complex but are easy enough for confident beginners to accomplish. Simple fusible applique adds a touch of the English garden to the design. Perfect for your drawing room.

Fabric Requirements

		Yardage	Fabric
Fabric A	block centers	45cms	7318-K
Fabric B	block centers	45cms	7318-P
Fabric C	blocks, vines	1.8 m	7319-K
Fabric D	blocks, borders	1 40 m	7320-K
Fabric E	blocks	1 40 m	7319-P
Fabric F	blocks	30 cms	7320-P
Fabric G	blocks, borders	2,50m	7330-OGL
Fabric H	blocks, binding	1,60m	7330-GK
Fabric I	blocks, flowers	80 cms	7390-P
Fabric J	flowers	35 cms	7390-BR
Fabric K	flowers	15cms	7331-PK
Fabric L	leaves	25cms	7332-OG
Backing		4,80m	7320-P

Cutting Directions

Note: Read assembly directions before cutting patches. Borders are cut to exact length required plus ¼" seam allowance. WOF designates the width of fabric from selvedge to selvedge (approximately 42" wide).

Fabric A Fussy cut (3) 8 ½" squares.

Fabric B Fussy cut (3) 8 ½" squares.

Fabric C Cut (4) 6 ½" x WOF strips. Sub-cut the strips into (21) 6 ½" squares.
Cut (3) 4 ½" x WOF strips. Sub-cut the strips into (24) 4 ½" squares.
See instructions to cut (8) vines (½" bias strips).

Fabric D Cut (4) 2 ½" x WOF strips. Sew the strips together, end to end, and cut (2) 2 ½" x 62 ½" strips.
Cut (3) 2 ½" x WOF strips. Sew the strips together, end to end, and cut (2) 2 ½" x 48 ½" strips.
Cut (4) 2 ½" x WOF strips. Sew the strips together, end to end, and cut (2) 2 ½" x 78 ½" strips.

Fabric D (cont.) Cut (4) 2 ½" x WOF strips. Sew the strips together, end to end, and cut (2) 2 ½" x 64 ½" strips.
Cut (1) 2 ⅞" x WOF strip. Sub-cut the strip into (12) 2 ⅞" squares.
Cut (1) 2 ½" x WOF strip. Sub-cut the strip into (12) 2 ½" squares.

Fabric E Cut (4) 6 ½" x WOF strips. Sub-cut the strips into (21) 6 ½" squares.
Cut (3) 4 ½" x WOF strips. Sub-cut the strips into (24) 4 ½" squares.

Fabric F Cut (1) 2 ⅞" x WOF strip. Sub-cut the strip into (12) 2 ⅞" squares.
Cut (1) 2 ½" x WOF strip. Sub-cut the strip into (12) 2 ½" squares.

Fabric G Cut (5) 5 ½" x WOF strips. Sew the strips together, end to end, and cut (2) 5 ½" x 52 ½" strips and (2) 5 ½" x 44 ½" strips.
Cut (2) 2 ½" x WOF strips. Sub-cut the strips into (3) 2 ½" x 16 ½" strips.
Cut (2) 2 ½" x 34 ½" strips.

Fabric G
(cont.)

Cut (7) $3\frac{1}{2}$ " x WOF strips. Sub-cut the strips into (84) $3\frac{1}{2}$ " squares.
Cut (8) $2\frac{1}{2}$ " x WOF strips. Sub-cut the strips into (120) $2\frac{1}{2}$ " squares.
Cut (2) $2\frac{7}{8}$ " x WOF strips. Sub-cut the strips into (24) $2\frac{7}{8}$ " squares.

Fabric H

Cut (7) $3\frac{1}{2}$ " x WOF strips. Sub-cut the strips into (84) $3\frac{1}{2}$ " squares.
Cut (3) $2\frac{1}{2}$ " x WOF strips. Sub-cut the strips into (48) $2\frac{1}{2}$ " squares.
Cut (8) $2\frac{1}{2}$ " x WOF strips for the binding.

Fabric I

Cut (3) $2\frac{1}{2}$ " x WOF strips. Sub-cut the strips into (48) $2\frac{1}{2}$ " squares.
See instructions to cut (6) large flowers.
See instructions to cut (18) small flowers.

Fabric J

See instructions to cut (6) large inner flowers.
See instructions to cut (18) small inner flowers.

Fabric K

See instructions to cut (6) large flower centers.
See instructions to cut (18) small flower centers.

Fabric L

See instructions to cut (40) leaves.

Backing

Cut (2) 90" x WOF strips. Sew the strips together and trim to make (1) 72" x 90" square backing.

Making the Quilt

1. Block One

Place (1) $2\frac{7}{8}$ " Fabric D square on top of (1) $2\frac{7}{8}$ " Fabric G square, right sides together. Draw a line across the diagonal of the top square (Diagram 1). Sew $\frac{1}{4}$ " away from each side of the drawn diagonal line (Diagram 1). Cut the (2) squares apart on the drawn diagonal line (Diagram 2) to make (2) D/G units (Diagram 3). Trim D/G units to measure $2\frac{1}{2}$ ". Repeat to make (24) D/G units total.

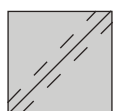


Diagram 1

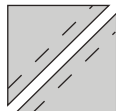


Diagram 2

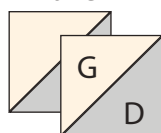


Diagram 3

- Sew (1) $2\frac{1}{2}$ " Fabric G square, (1) $2\frac{1}{2}$ " Fabric D square and (2) D/G units together to make (1) Block One corner block (Diagram 4). Repeat to make (12) Block One corner blocks.

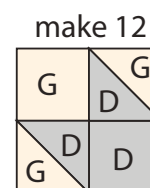


Diagram 4

- Place (1) $2\frac{1}{2}$ " Fabric G square on the top left corner of (1) $4\frac{1}{2}$ " Fabric E square, right sides together (Diagram 5). Sew across the diagonal of the smaller square from the upper right corner to the lower left corner (Diagram 5). Flip open the triangle formed and press (Diagram 6). Trim away the excess fabric from behind the triangle $\frac{1}{4}$ " away from the sewn seam.

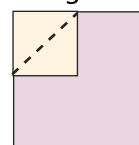


Diagram 5

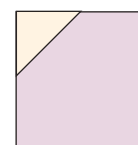


Diagram 6

- Follow Diagram 7 for the seam direction to add a $\frac{1}{2}$ " Fabric G square to the top right corner and (1) $2\frac{1}{2}$ " Fabric H square to each of the lower corners of the $4\frac{1}{2}$ " Fabric E square to make (1) Block One side block (Diagram 8).

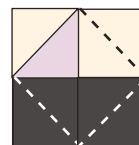


Diagram 7

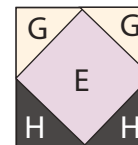


Diagram 8

- Repeat Steps 3-4 to make (24) Block One side blocks total.
- Follow Diagram 9 to sew together (8) Block One side units, (4) Block One corner units and (1) $8\frac{1}{2}$ " Fabric B square to make (1) Block One. Repeat to make (3) $16\frac{1}{2}$ " Block One squares total.

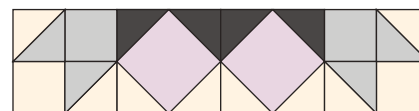
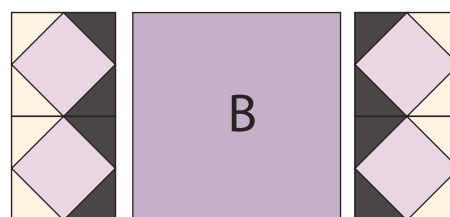
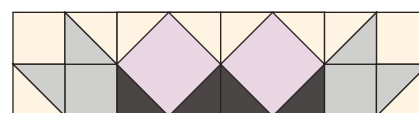


Diagram 9

7. Block Two

Repeat Step 1 using (12) $2\frac{7}{8}$ " Fabric G squares and (12) $2\frac{7}{8}$ " Fabric F squares to make (24) F/G $2\frac{1}{2}$ " units for Block Two.

8. Sew (1) $2\frac{1}{2}$ " Fabric G square, (1) $2\frac{1}{2}$ " Fabric F square and (2) F/G units together to make (1) Block Two corner block (Diagram 10). Repeat to make (12) Block Two corner blocks.

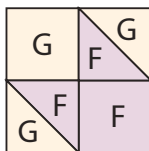


Diagram 10

9. Repeat Steps 3-4 using (48) $2\frac{1}{2}$ " Fabric G squares, (48) $2\frac{1}{2}$ " Fabric I squares and (24) $4\frac{1}{2}$ " Fabric C squares to make (24) Block Two side units total (Diagram 11).

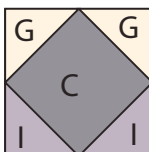


Diagram 11

10. Follow Figure 12 to sew together (8) Block One side units, (4) Block One corner units and (1) $8\frac{1}{2}$ " Fabric A square to make (1) Block Two. Repeat to make (3) $16\frac{1}{2}$ " Block Two squares total.

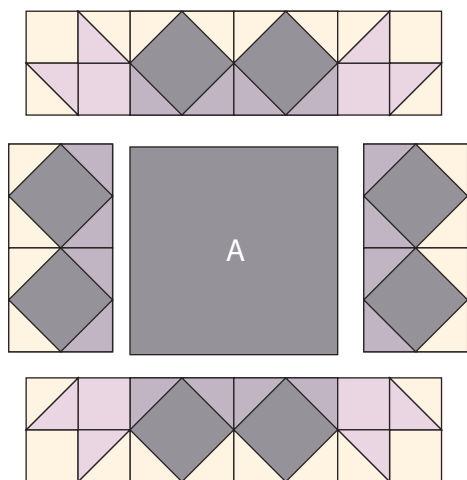


Diagram 12

11. Block Three

Follow Steps 3-4 using (84) $3\frac{1}{2}$ " Fabric G squares and (21) $6\frac{1}{2}$ " Fabric C squares to make (21) Block Threes total.

12. Block Four

Follow Steps 3-4 (84) $3\frac{1}{2}$ " Fabric H squares and (21) $6\frac{1}{2}$ " Fabric E squares to make (21) Block Fours total.

13. Quilt Top

Refer to Diagram 13 when assembling the quilt top.

Sew (1) Block One, (1) $2\frac{1}{2}$ " x $16\frac{1}{2}$ " Fabric G strip and (1) Block Two together, in that order, to make Row One. Repeat to make Row Three.

14. Sew (1) Block Two, (1) $2\frac{1}{2}$ " x $16\frac{1}{2}$ " Fabric G strip and (1) Block One together, in that order, to make Row Two.

15. Sew the (3) block rows and (2) $2\frac{1}{2}$ " x $34\frac{1}{2}$ " Fabric G strips together to make the quilt top.

16. Sew (1) $5\frac{1}{2}$ " x $52\frac{1}{2}$ " Fabric G strip to each side of the quilt top. Sew (1) $5\frac{1}{2}$ " x $44\frac{1}{2}$ " Fabric G strip to the top and bottom of the quilt top.

17. Following the manufacturer's instructions, trace the listed number of each template onto the paper side of the fusible web. Roughly cut out each template about $\frac{1}{8}$ " outside the drawn lines.

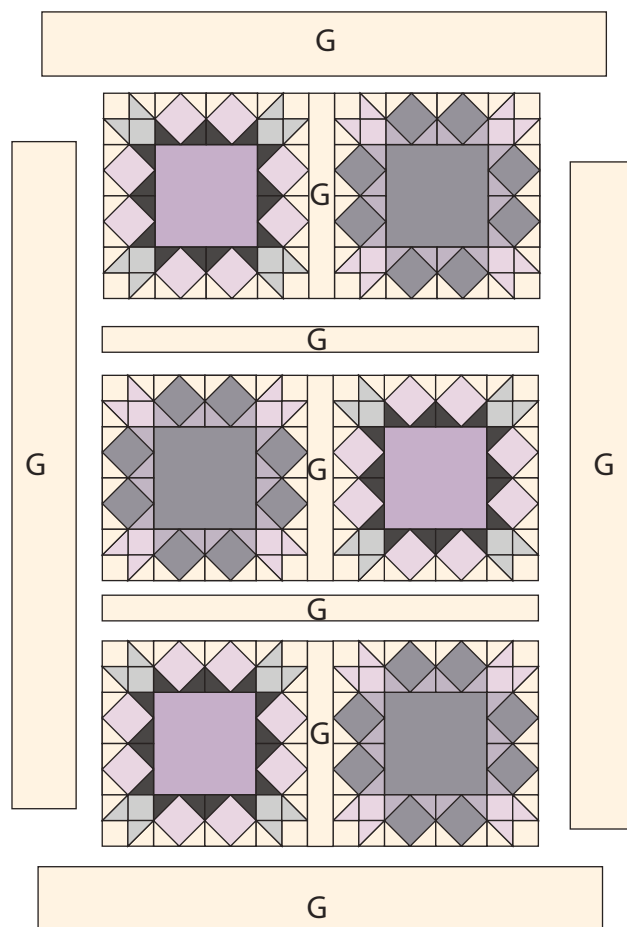
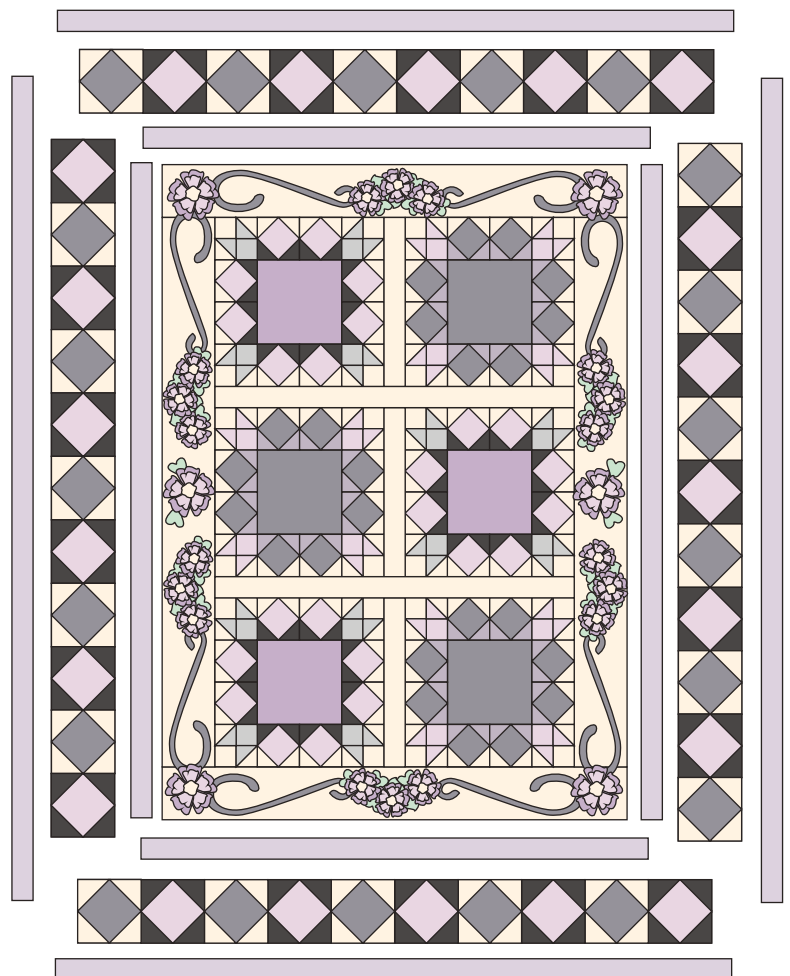


Diagram 13

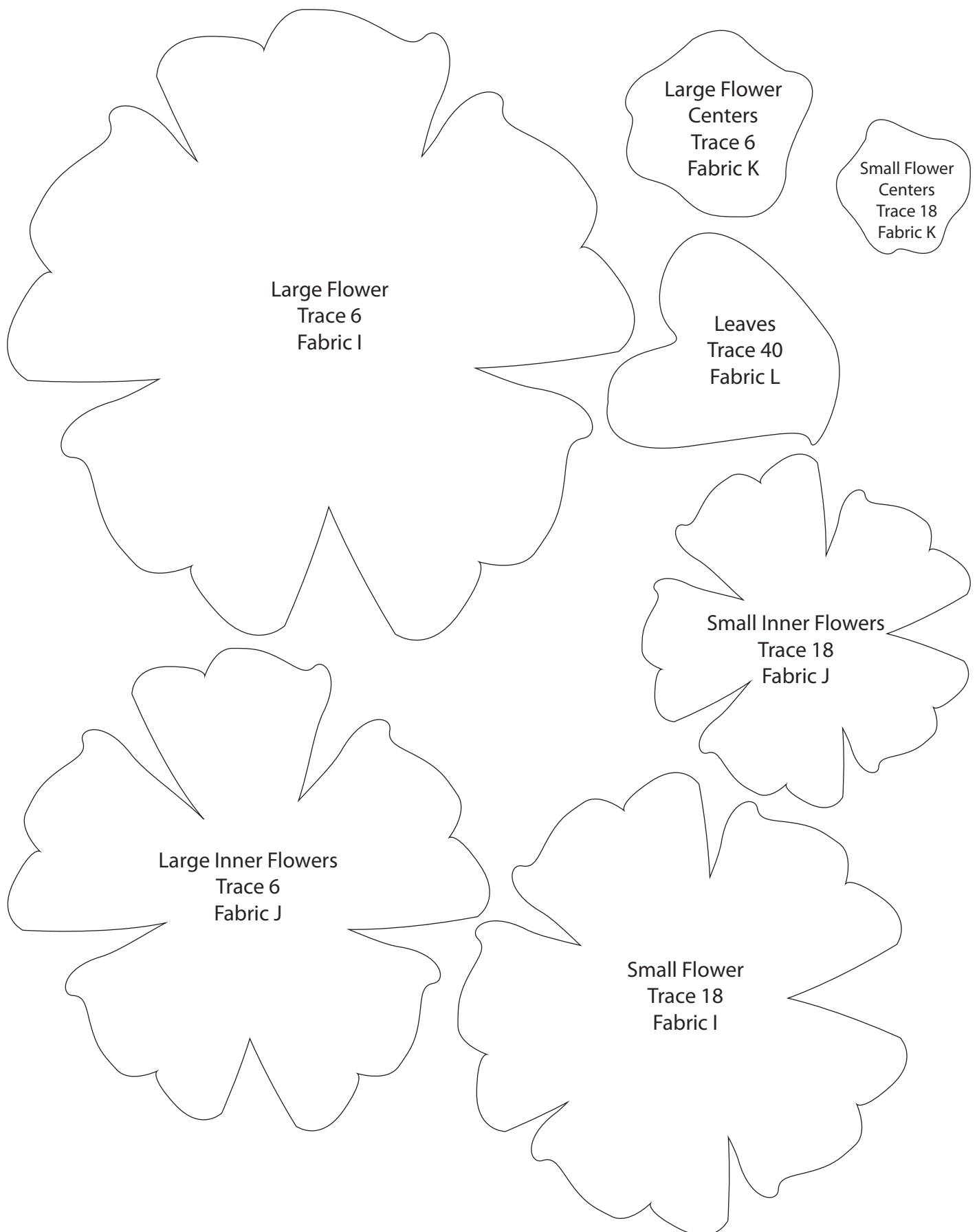
18. Press each template onto the wrong side of the fabrics as listed on the templates. Cut out each template on the drawn lines. For the vines, press fusible web to the wrong side of the remaining Fabric C. Cut (8) 1/2" strips on the bias through the widest part of the fabric to make the vines (piece together, if needed).
19. Refer to the quilt photo to arrange and press the (6) large flowers, (6) large inner flowers, (6) large flower centers, (18) small flowers, (18) small inner flowers, (18) small flower centers, and (8) vines onto the 5 1/2" Fabric G borders. NOTE: Refer to the quilt photo and gently curve the bias vines as shown and press in place.
20. Finish the raw edges of each shape with a decorative stitch such as a buttonhole or satin stitch.
21. Sew (1) 2 1/2" x 62 1/2" Fabric D strip to each side of the quilt top. Sew (1) 2 1/2" x 48 1/2" Fabric D strip to the top and bottom of the quilt top (See Quilt Layout).
22. Sew (6) Block Fours and (5) Block Threes together, alternating them, to make the left side border. Sew the border to the quilt top.
23. Sew (6) Block Threes and (5) Block Fours together, alternating them, to make the right side border. Sew the border to the quilt top.
24. Sew (5) Block Threes and (5) Block Fours together, alternating them, to make the top border. Repeat to make the bottom border. Sew the borders to the quilt top.
25. Sew (1) 2 1/2" x 78 1/2" Fabric D strip to each side of the quilt top. Sew (1) 2 1/2" x 64 1/2" Fabric D strip to the top and bottom of the quilt top.

Finishing the Quilt

26. Layer and quilt as desired.
27. Sew the (8) 2 1/2" x 42" Fabric H strips together, end to end with a 45 degree seam, to make the binding. Fold this long strip in half lengthwise with wrong sides together and press.
28. Bind as desired.



Quilt Layout





7319 K



7332 K



7320 K



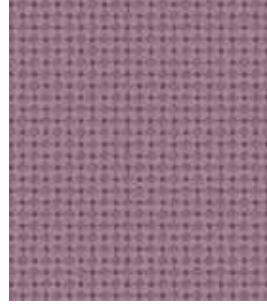
7318 K



THE DOWAGER



7331 PK



7390 P



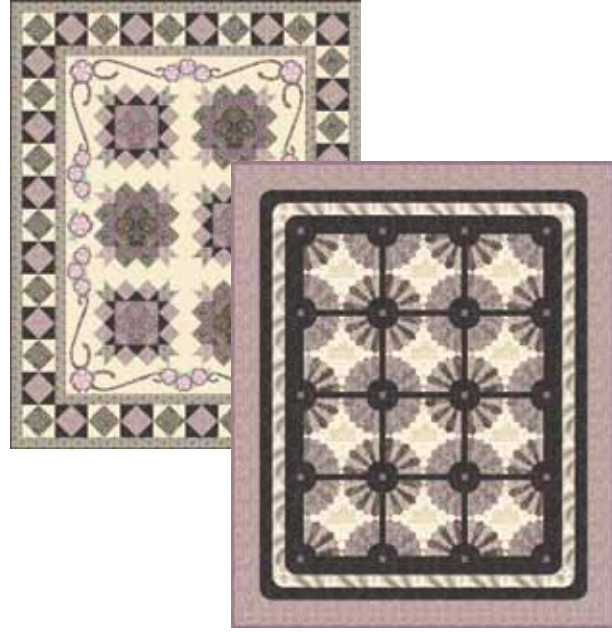
7318 P



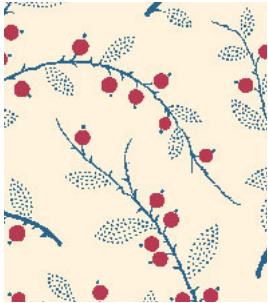
7319 P



7320 P



7322 B



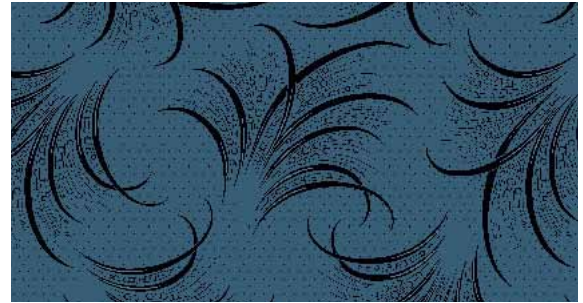
7321 R



7323 RB



7330 GK



7322 B



LADY MARY



7331 RG



7390 RB



7322 R



7321 G



7323 GN



7322 R



Download free quilt patterns www.makoweruk.com



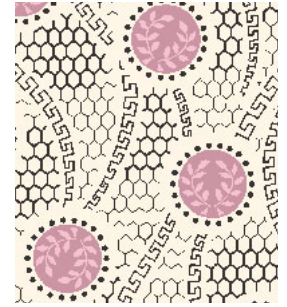
7325 B



7332 B



7324 E



7326 E



LADY SYBIL



7331 EB



7330 ET



7325 ET



7324 B



7326 B

Download free quilt patterns www.makoweruk.com



7328 B



7332 OG



7329 B



7327 B



LADY EDITH



7330 OGL



7390 BR



Download free quilt patterns www.makoweruk.com



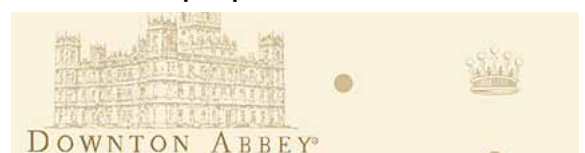
7328 OG



7327 O



7329 O



7317 N