

Downton Abbey®

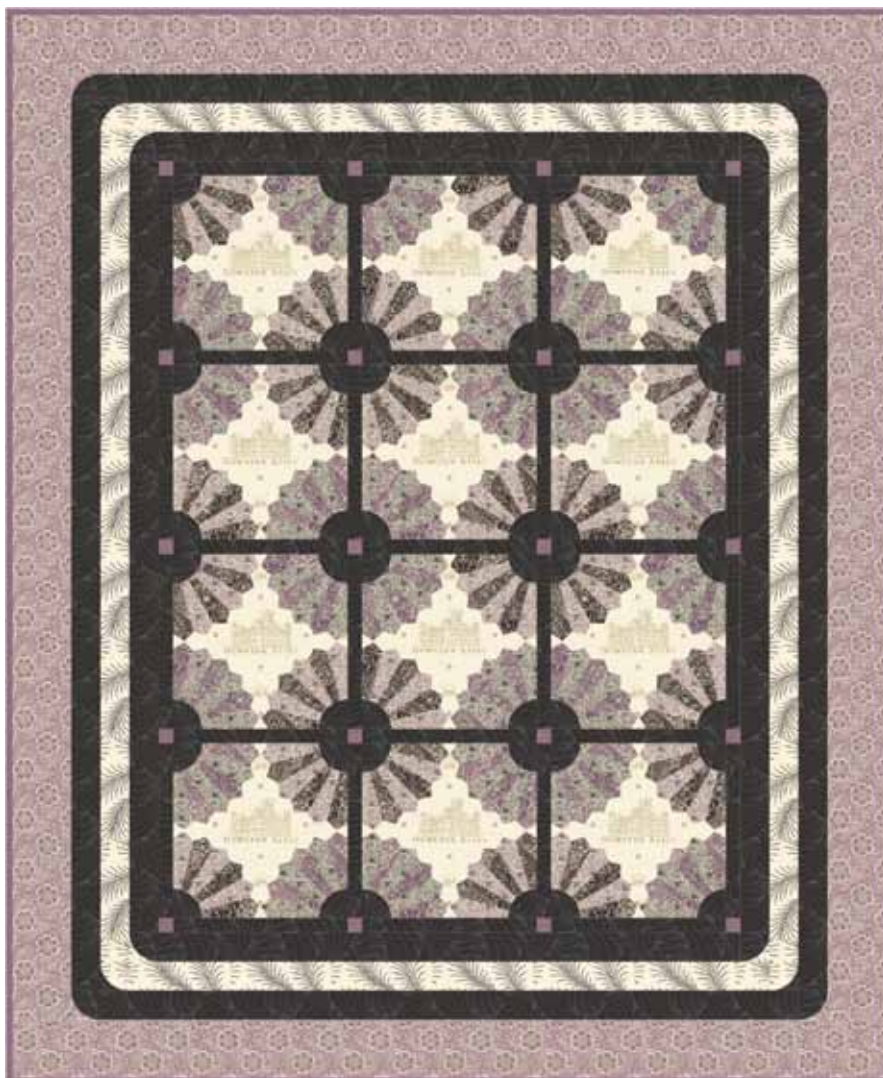
FABRICS BY KATHY HALL



Fanfare Quilt Design: Chris Hoover

Sewn by Carole Johnson

Quilt Size: 60" x 73" (1,52 x 1,85cms)



©2013 Downton Abbey

Downton™ and Downton Abbey®. ©2013
Carnival Film & Television Limited. All Rights Reserved.

Free download Pattern at www.makoweruk.com

makower uk
The Henley Studio

118 Greys Road, Henley-on-Thames, Oxon RG9 1QW.
Tel: +44(0)1491 579727
e-mail info@makoweruk.com www.makoweruk.com

a andover

Fanfare



Introducing Andover Fabrics new collection: Downton Abbey®
 Quilt design by Chris Hoover • www.whirligigdesigns.com

Quilt finishes 60" x 73"
 12 Blocks: 12" x 12"

Cutting Directions

Note: Read assembly directions before cutting patches. All measurements are cut sizes and include 1/4" seam allowances. Borders are cut the exact lengths required plus 1/4" seam allowances. WOF designates the width of fabric from selvedge to selvedge (approximately 42" wide).

- Fabric A Fussy-cut (12) squares 12 1/2", centering Downton Abbey image in each
- Fabric B Cut (72) fan blades
- Fabric C Cut (72) fan blades
- Fabric D Cut (2) side borders 4 1/2" x 65 1/2", cut crosswise and pieced
 Cut (2) top/bottom borders 4 1/2" x 60 1/2", cut crosswise and pieced
 Cut (4) full-size template #2
- Fabric E Cut (72) fan blades
- Fabric F Cut (72) fan blades
- Fabric G Note: Borders 1 and 3 are listed in order they are needed
 Cut (2) side borders 2 1/2" x 53 1/2", cut crosswise and pieced
 Cut (2) t/b borders 2 1/2" x 40 1/2", cut crosswise
 Cut (2) side borders 2 1/2" x 61 1/2", cut crosswise and pieced
 Cut (2) t/b borders 2 1/2" x 48 1/2", cut crosswise and pieced
 Cut (31) sashes 1 1/2" x 12 1/2"
 Cut (56) template #1
 Cut (4) template #2
- Fabric H Cut (2) side borders 2 1/2" x 57 1/2", cut crosswise and pieced
 Cut (2) t/b borders 2 1/2" x 44 1/2", cut crosswise and pieced
 Cut (4) template #1
 Cut (4) template #2
- Fabric I Cut (7) strips 2 1/2" x WOF for binding
 Cut (20) squares 1 1/2" for corner stones
- Backing Cut (2) panels 41" x 68", pieced to fit quilt top with overlap on all sides

Fabric Requirements

	Yardage	Fabric	
Fabric A	blocks	2.75m	7317-N
Fabric B	fans	60cms	7318-K
Fabric C	fans	60cms	7318-P
Fabric D	border 4	90cms	7319-P
Fabric E	fans	60cms	7320-K
Fabric F	fans	60cms	7320-P
Fabric G	borders, sashes	1.60m	7330-GK
Fabric H	border 2	60cms	7332-K
*Fabric I	corner stones	60cms	7390-P
Backing		4.00m	7319-K
*includes binding			

Making the Quilt

1. Fan Blocks: Fold fan blade in half length-wise with right sides together and raw edges even (Diagram 1). Sew across top of blade in a 1/4" seam allowance as shown by dotted line. Trim corner at fold as shown by solid line. Finger press seam open. Turn blade right side out and press, keeping the seam centered so the point is symmetrical. The point is now "lined." Repeat on remaining fan blades. You should have 72 blades of each appropriate fabric.

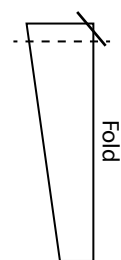


Diagram 1

Fanfare Quilt

- Fans are made in 4 different color ways (Diagram 2). Two are made with Fabrics B and F (Fans 1 and 2), and 2 use Fabrics C and E (Fans 3 and 4). With right sides together, join 2 blades side by side, having them even at the top where the points begin. Start stitching at the top of the blade (Diagram 3). Be careful not to catch the lining of the points. Join a total of 6 blades in the order shown to make each fan. Make 12 of each type of fan. Press all seams open.
- Choose one of two methods for adding a handle (template #1) to each fan. To piece, position the bottom raw edge of the fan on top of the curved edge of the handle, right sides together. Pin and stitch along the curve, easing the layers together. Press seam allowances toward the handle. Repeat for all fans (Diagram 4). Directions for appliqué handles are described in Step 5.
- There are 4 different blocks. Note carefully the fan placement because this arrangement allows the fans to match where blocks meet. Arrange one of each fan on the corners of a Fabric A background square with raw edges even, noting position of fans (Diagram 5). Appliqué points of fans to the square using your favorite method. Make 4 Block W, 2 Block X, 2 Block Y, and 4 Block Z. Skip step 5 if you pieced the handles.
- If you are appliquéing the handles, press under the seam allowance on the curved edge of each handle (template #1). Position a handle on a corner of the block with raw edges even, with the pressed curved edge covering the bottom raw end of a fan. Appliqué the curved edge of the handle onto the fan. Repeat in all 4 corners of each block.
- To reduce bulk in block, trim away background fabric beneath each fan.
- Refer to the Quilt Assembly Diagram and quilt photograph for the next steps. Join 3 blocks and 4 Fabric G sashes in each of 4 rows, noting orientation of blocks. Join 4 Fabric I corner stones and 3 sashes in each of 5 rows. Join rows in the order shown.
- Border Units: With right sides together, pin a Fabric H template #2 on top of a Fabric G template #1, easing curved edges. Sew along the curved edge. Press seam allowances toward the larger patch. Make 4 of each Border Unit using fabrics shown (Diagram 6).
- Adding Borders: Refer to the Quilt Assembly Diagram. Sew Fabric G side border strips to the quilt. Sew correct Border Units to the top and bottom border strips and sew to the quilt. Likewise, add borders 2 and 3 as described above. Finally, sew Fabric D border 4 to the quilt, sides first.

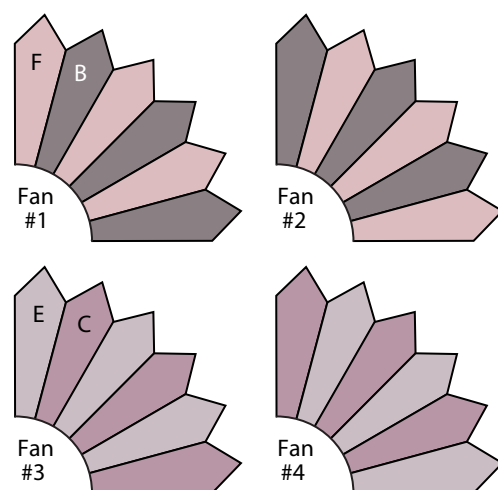


Diagram 2

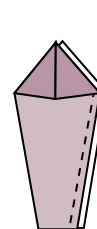


Diagram 3

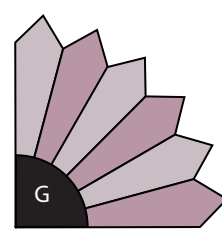
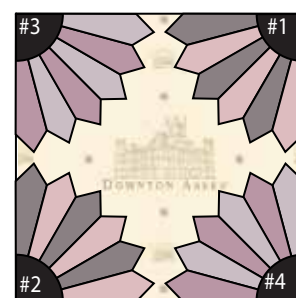


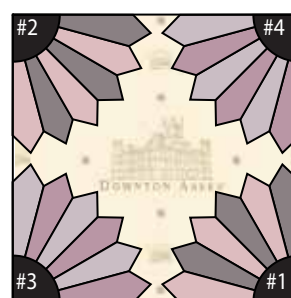
Diagram 4



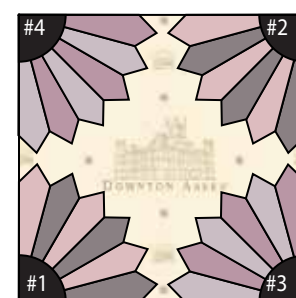
Block W- Make 4



Block X- Make 2



Block Y- Make 2



Block Z- Make 4



Border Unit 1



Border Unit 2



Border Unit 3

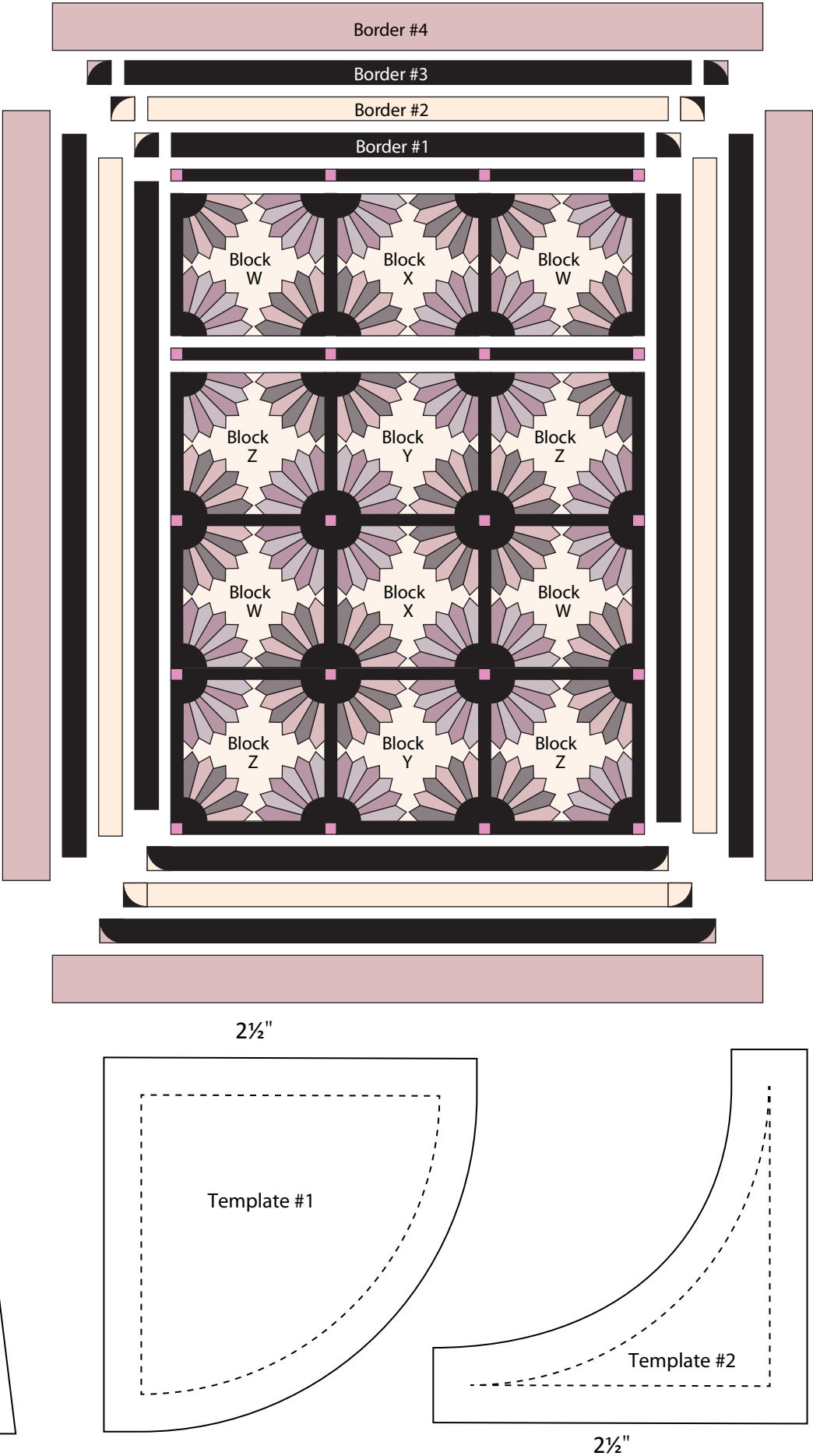
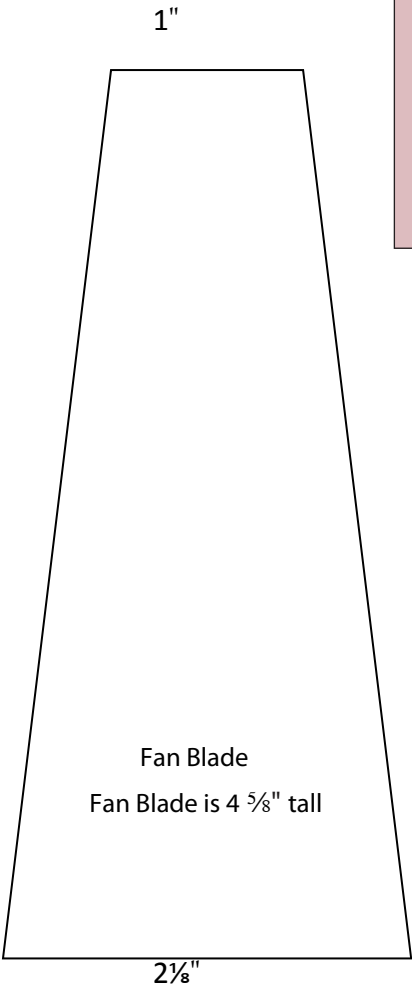
Diagram 6

Fanfare Quilt

Finishing the Quilt

10. Layer the quilt with batting and backing and baste. Quilt in the ditch around borders and block patches. Quilt around the printed motifs in the blocks and outer border. Bind to finish the quilt.

Quilt Assembly Diagram





7319 K



7332 K



7320 K



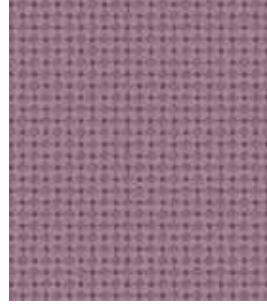
7318 K



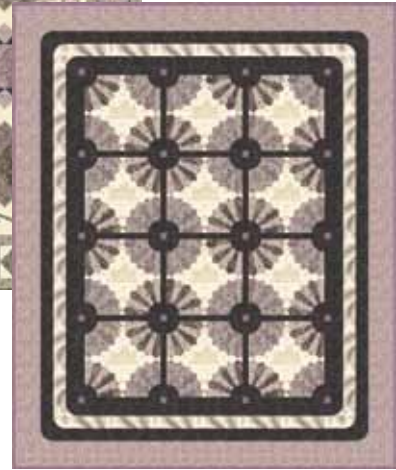
THE DOWAGER



7331 PK



7390 P



7318 P



7319 P



7320 P

Download free quilt patterns www.makoweruk.com



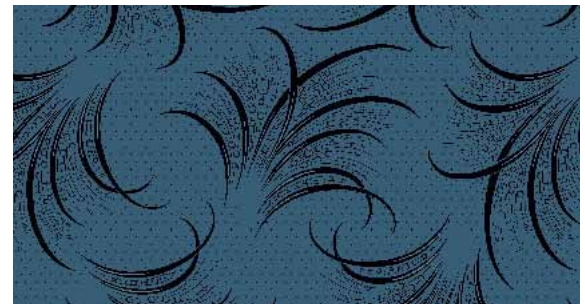
7321 R



7323 RB



7330 GK



7322 B



LADY MARY



7331 RG



7390 RB



7321 G



7323 GN



7322 R

Download free quilt patterns www.makoweruk.com



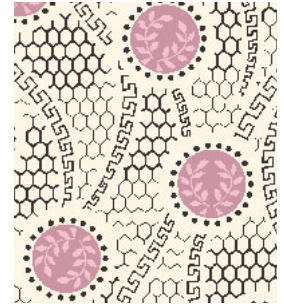
7325 B



7332 B



7324 E



7326 E



LADY SYBIL



7331 EB



7330 ET



7325 ET



7324 B



7326 B

Download free quilt patterns www.makoweruk.com



7328 B



7332 OG



7329 B



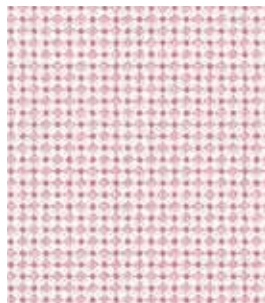
7327 B



LADY EDITH



7330 OGL



7390 BR



Download free quilt patterns www.makoweruk.com



7328 OG



7327 O



7329 O



7317 N