

Downton Abbey®

FABRICS BY KATHY HALL



Crazy Quilt Design:
Jean Ann Wright

Quilted by: Karyn Lovelace

Quilt Size: 48 " x 58 "

www.makoweruk.com



About Downton Abbey®

In addition to the women's fabric collections, we've also included four additional patterns that are unmistakably Downton. Each companion print is colored to complement and tie together the women's collections, and sets the scene for each character, just as Downton Abbey does.

Downton™ and Downton Abbey®. ©2013
Carnival Film & Television Limited. All Rights Reserved.

andover • makower uk
• The Henley Studio
•

Free Pattern Download Available

www.makoweruk.com

Crazy Quilt

Introducing Andover Fabrics new collection:
Quilt designed and made by Jean Ann Wright

Downton Abbey® by Kathy Hall



Quilt finishes 48" x 58"

Block Sizes: 10" x 10" and 10" x 20"

For fans of this award-winning ITV series, this quilt will strike a note of recognition. Members of the Crawley family—the dowager, Edith, Mary, and Sybil—have blocks named for them that are made with fabric prints each person might have worn. The story of this beloved television family begins in 1912, so the crazy quilt blocks are appropriate for the time period. The quilt is easy for anyone with some knowledge of paper foundation piecing methods.

Fabric Requirements

			Yardage	Fabric
Fabric A	blocks, border		1 m	7322-B
Fabric B	binding		$\frac{3}{4}$ m	7322-R
Fat $\frac{1}{4}$'s	blocks		fat $\frac{1}{4}$ m each	
*7317-N	7318-K	7318-P	7319-K	7319-P
7320-K	7320-P	7327-B	7327-O	7328-B
7328-OG	7329-B	7329-O	7321-G	7321-R
7323-GN	7323-RB	7324-B	7324-E	7325-B
7325-ET	7326-B	7326-E	7330-ET	7330-GK
7330-OGL	7332-B	7332-K	7332-OG	7390-BR
7390-P	7390-RB			
*Backing			2.70m	7317-N

Cutting Directions

Note: Read assembly directions before cutting patches. A fat $\frac{1}{4}$ is an 18" x 20"-22" cut. Borders are cut the exact lengths required plus $\frac{1}{4}$ " seam allowances. WOF designates the width of fabric from selvedge to selvedge (approximately 42" wide).

- Fabric A** Cut (2) side borders 4 $\frac{1}{2}$ " x 50 $\frac{1}{2}$ ", cut crosswise and pieced
Cut (2) top/bottom borders 4 $\frac{1}{2}$ " x 48 $\frac{1}{2}$ ", cut crosswise and pieced
Cut patches for PFP blocks (see Step 3)
- Fabric B** Cut (6) strips 2 $\frac{1}{2}$ " x WOF for binding
Cut patches for PFP blocks (see Step 3)
- Fat $\frac{1}{4}$'s** From each:
Cut patches as needed for paper-foundation pieced blocks (see Step 3)
- Backing** Cut (2) panels 32" x 53", pieced to fit quilt top with overlap on all sides

Making the Quilt

- The block patterns are given at half-size and are shown in reverse for paper-foundation piecing (PFP). Some blocks are made with 2 or 4 sections that are paper-foundation pieced and then joined. Photocopy each pattern section at 200%, copying parts of the block on multiple sheets as needed. Hint: Office supply stores such as Office Max or Staples have copiers capable of enlarging the block sections onto bigger sheets of paper. Make 4 copies each of the small block sections and make 2 copies of the large block sections.
- Yardage is generous to allow for over-sized PFP patches. To save time and fabric, trace each patch in Edith's block onto tracing paper just as they are shown on the photocopied pattern. Cut each traced template out separately.

- Before cutting all patches for a block, cut a patch #1 and a patch #2 as described here to be certain that you understand the placement of the templates when cutting the fabric, as well as the placement of the fabric patches on the paper-foundation block. Refer to each block diagram for fabric placement. Note that the Dowager, Edith, Mary, and Sybil Collection fabrics are used for the blocks with the same name. The Women's Collection fabrics are used in the larger blocks.

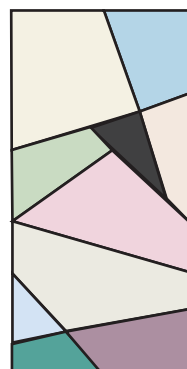
Pin a paper template drawn side facing up on the wrong side of the appropriate fabric. Cut the fabric patch, adding a generous $\frac{1}{2}$ " beyond the drawn line as you cut. Hint: Since Edith's 4 blocks are alike, you can stack 4 layers of the same fabric (all wrong side facing up), and cut 4 of the same patch at a time. The patches do not have to be precisely cut for paper-foundation piecing, but they do need to be "large enough" to cover the pattern shapes adequately. Cut the 6 patches for Edith's blocks from the 6 fabrics in the Lady Edith Collection.

- Use paper-foundation piecing methods to stitch patches to Edith's block paper pattern, beginning with patch #1, and adding patches in consecutive order. Remember that each fabric patch is placed on the undrawn side of the block pattern, and the stitching is done along the seam lines on the drawn side. Trim and press after each patch is added. Trim the completed block to a $10\frac{1}{2}$ " square, including seam allowances.
- Blocks for Mary, Sybil, and the Dowager are made in 2 sections that are paper-foundation pieced. Once both sections are pieced, trim along the long straight sides, leaving a $\frac{1}{4}$ " seam allowance. Then pin and join the 2 sections. Press this seam allowance open. Repeat the above steps to make 4 blocks each for Mary, Sybil, and the Dowager. The block made with The Women's Collection fabrics has 4 sections. Piece each section, trim the long edges, leaving a seam allowance, and then join the 4 sections to make the block. Make 2 like this. Trim the small blocks to $10\frac{1}{2}$ " square and the large blocks to $10\frac{1}{2}$ " x $20\frac{1}{2}$ ", including seam allowances. Remove the paper foundations from all blocks.

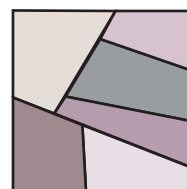
- If you plan to embroider the seams within the blocks, we suggest ironing lightweight leave-in stabilizer to the back of each block. Use perle cotton or silk embroidery floss to hand embroider along each seam. Fancy stitches on your machine also can be used to embroider the blocks. Add beading and other embellishments as desired.
- Refer to the Quilt Diagram. Arrange 6 small blocks in 2 horizontal rows as shown in the upper right corner of the diagram. Sew the 2 rows together, and add a large block on the left end. Join remaining blocks into 3 horizontal rows. Join the rows. Use a hand or machine feather stitch along the seams where blocks join.
- Sew the longer borders to the sides. Sew the shorter borders to the top and bottom. Embroider these seams if desired.

Finishing the Quilt

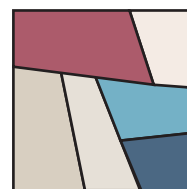
- Layer the quilt with batting and backing and baste. Quilt in the ditch around the border. Quilt around the printed motifs in the patches. Bind to finish the quilt.



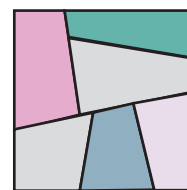
The Women's
Collection



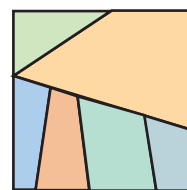
Dowager



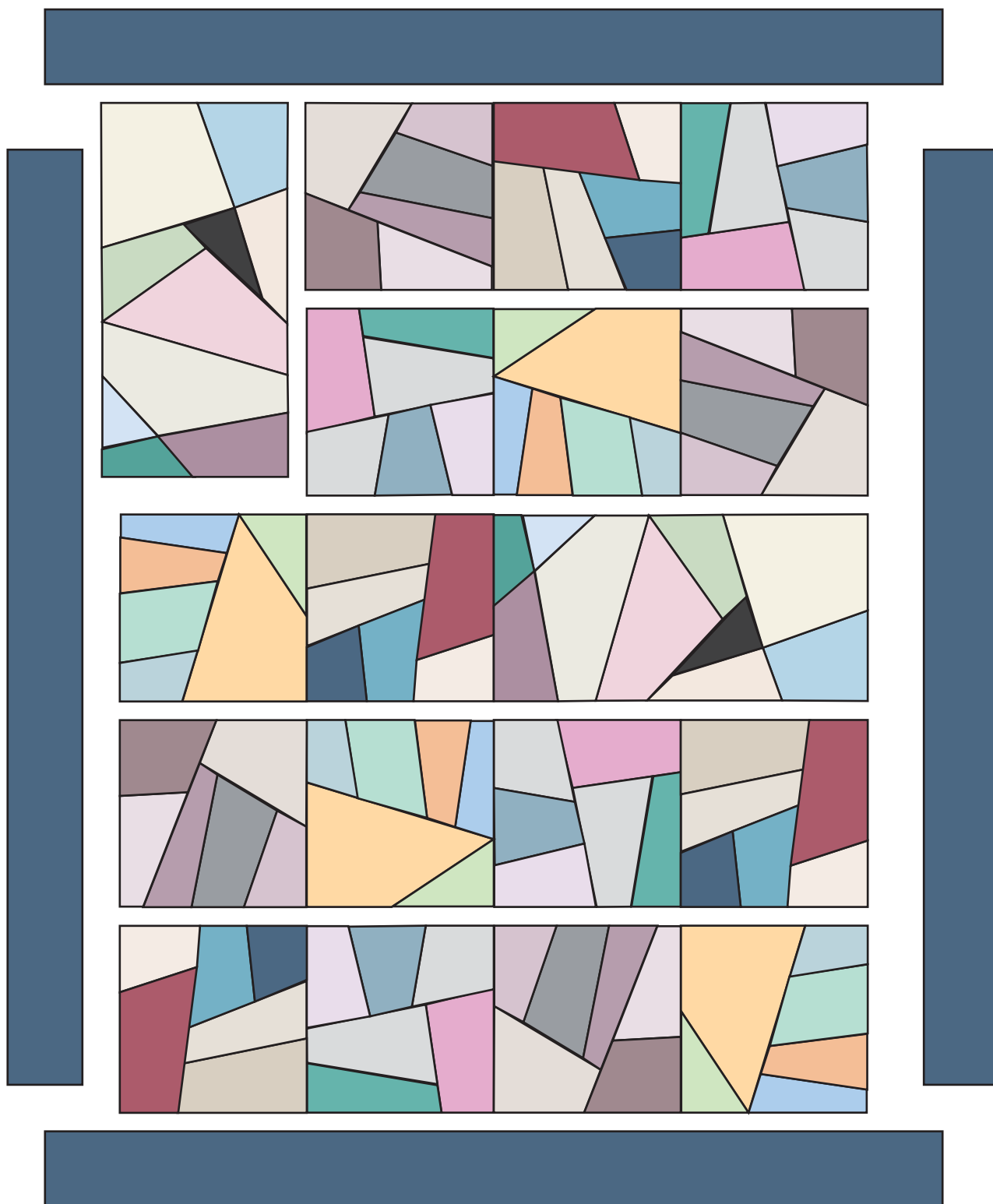
Mary



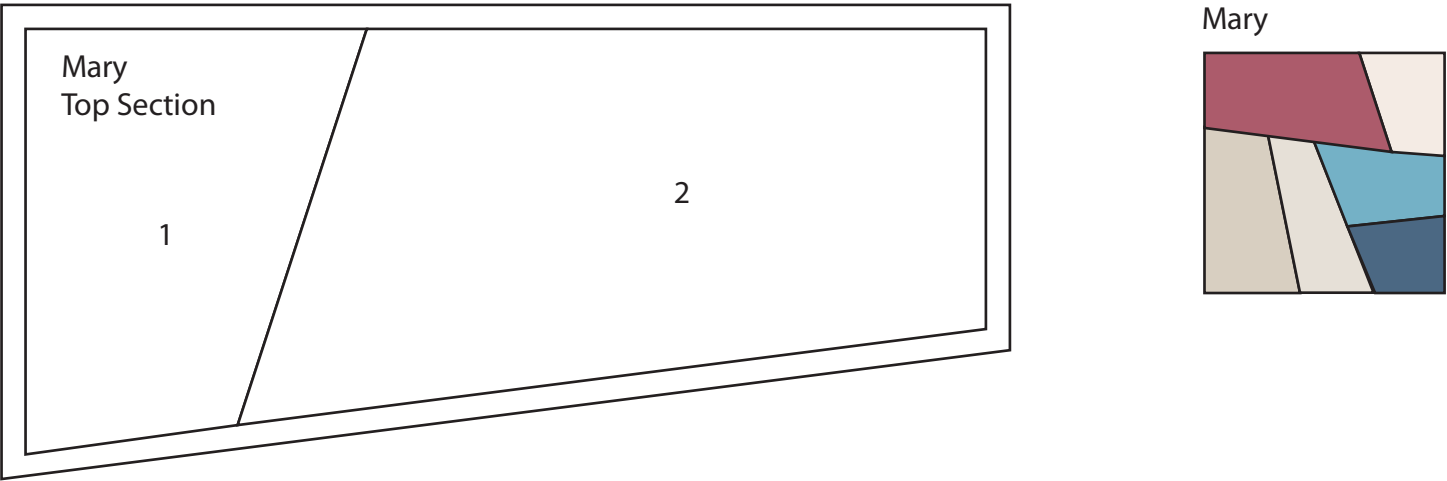
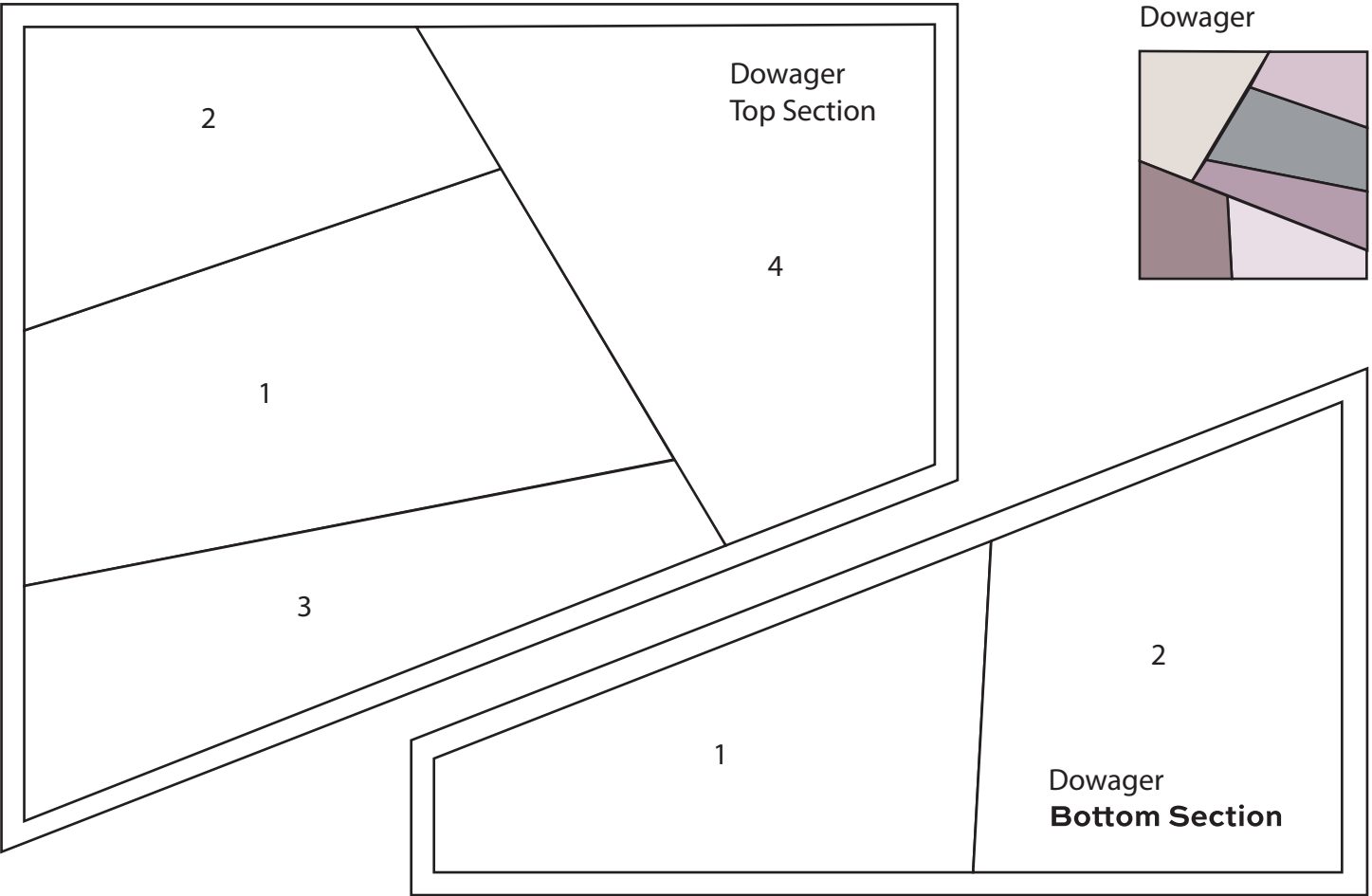
Sybil



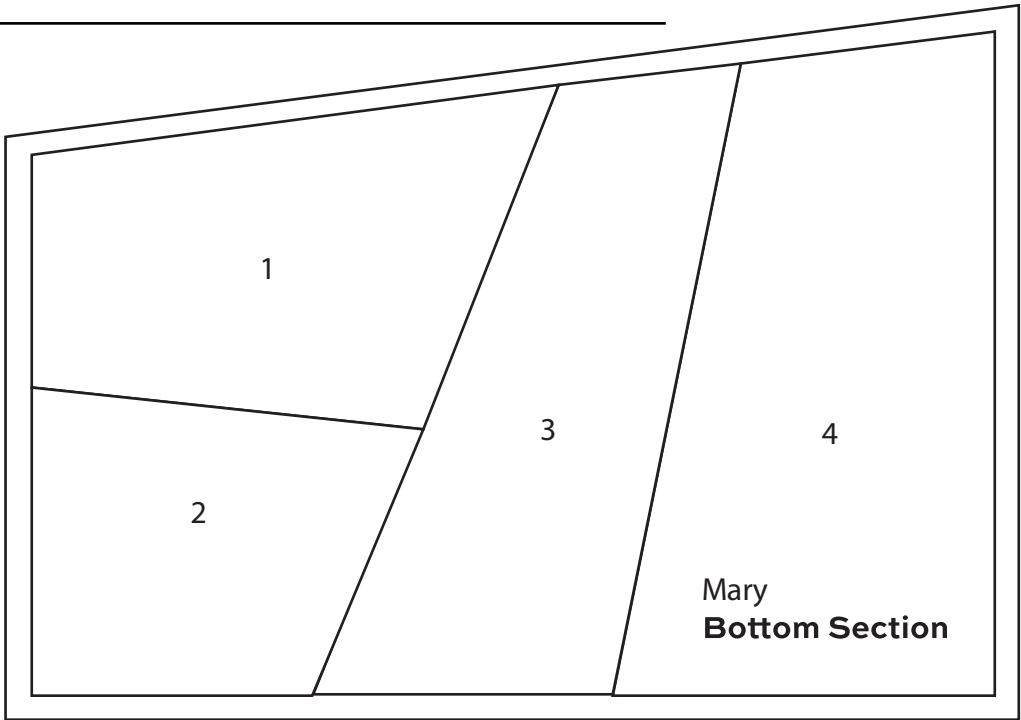
Edith



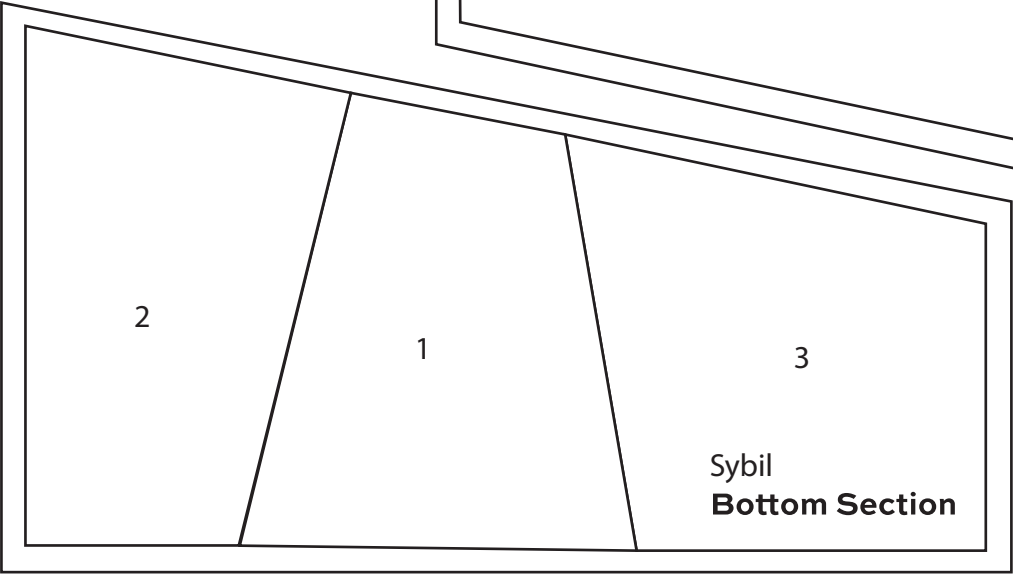
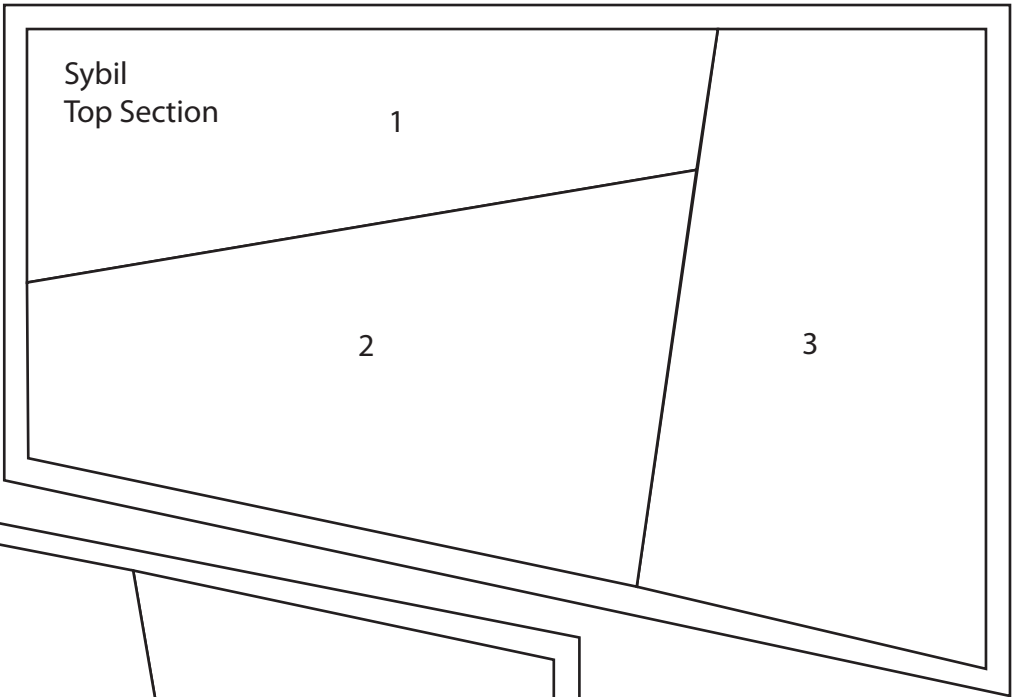
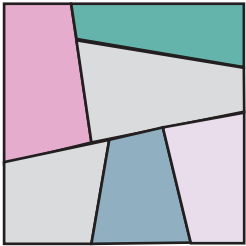
Quilt Diagram

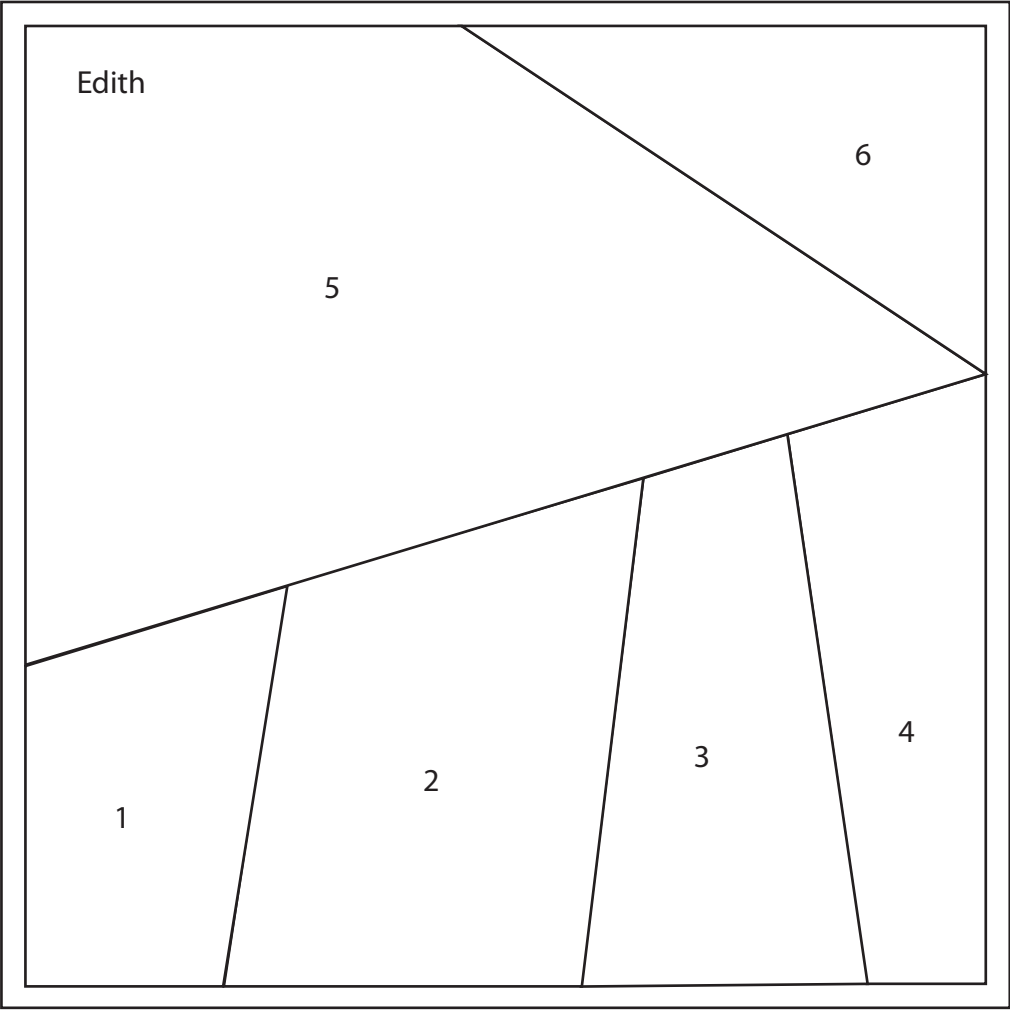


Crazy Quilt

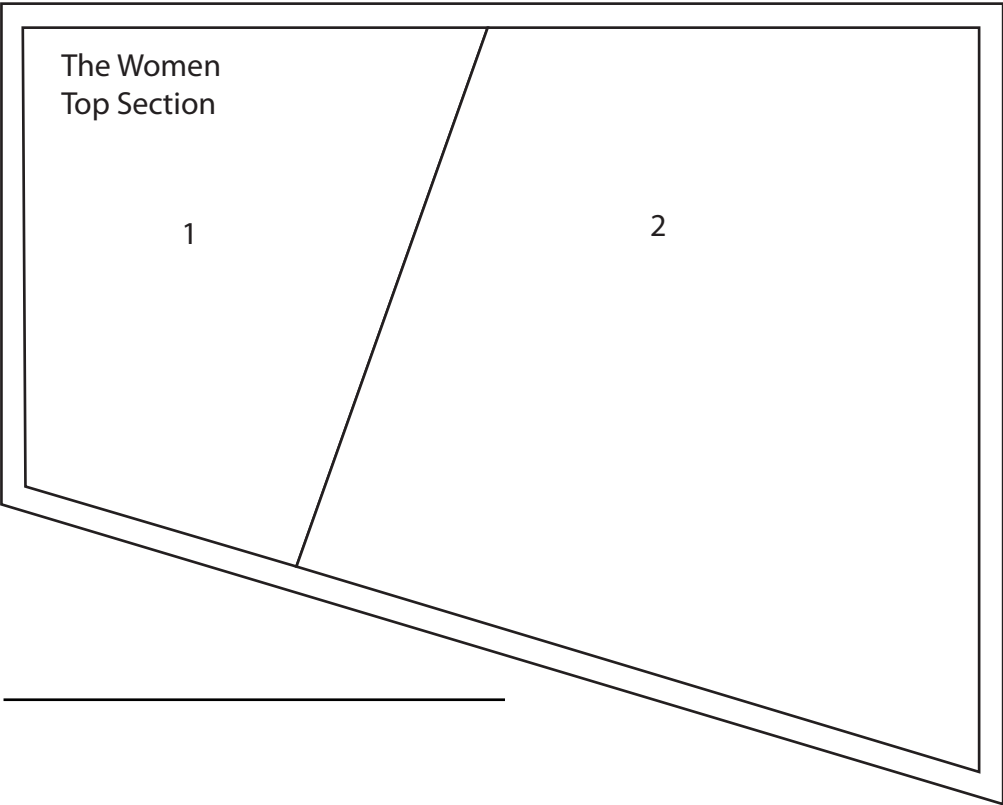
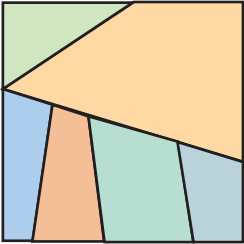


Sybil

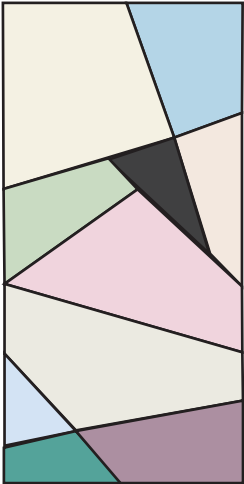


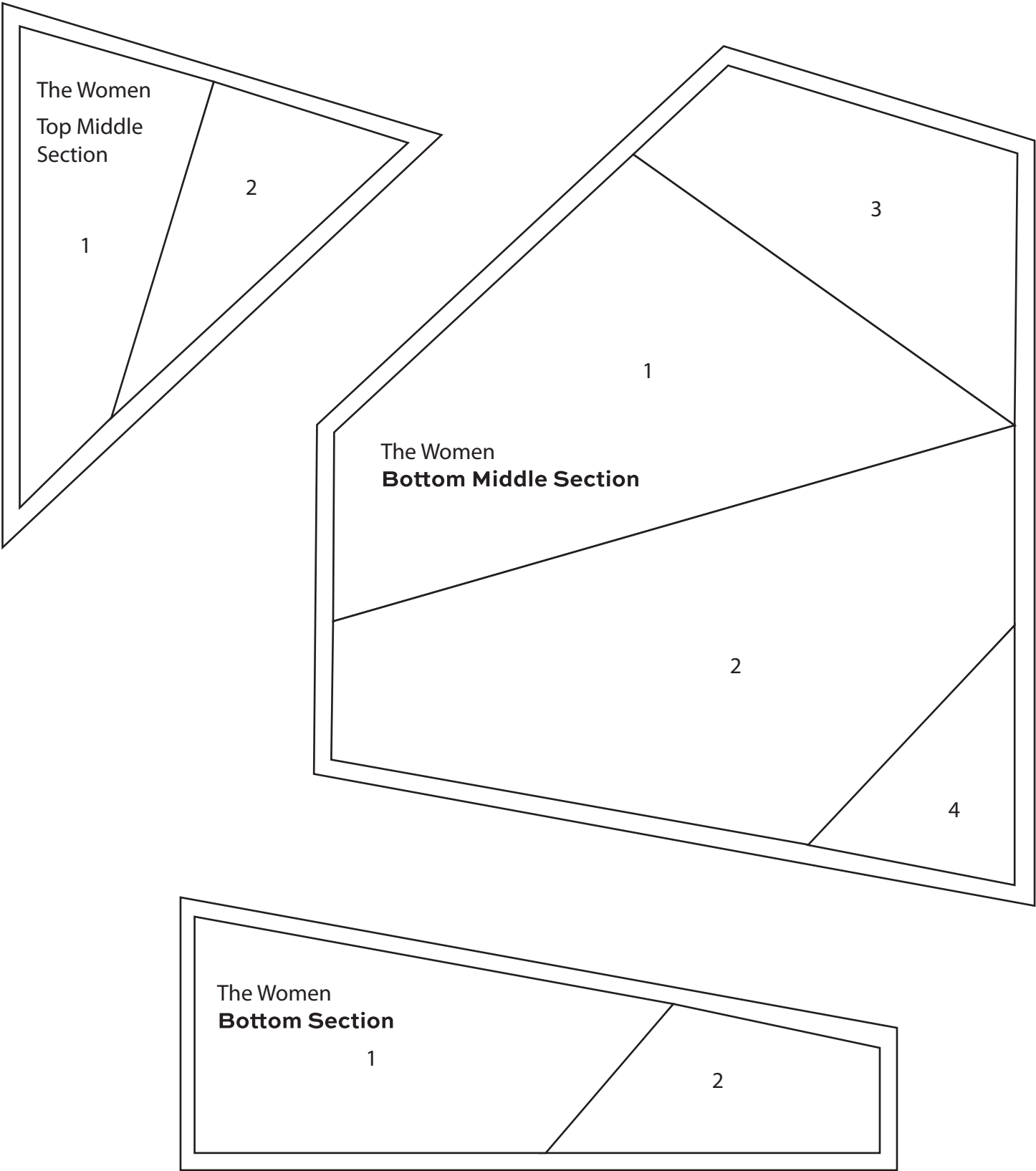


Edith



The Women







7319 K



7332 K



7320 K



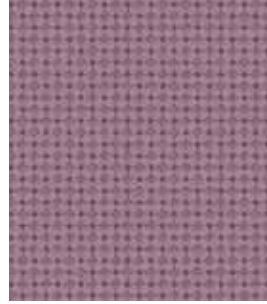
7318 K



THE DOWAGER



7331 PK



7390 P



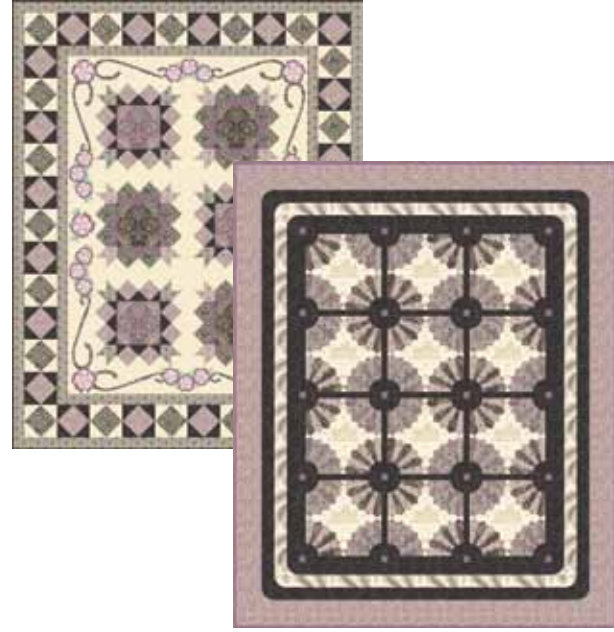
7318 P



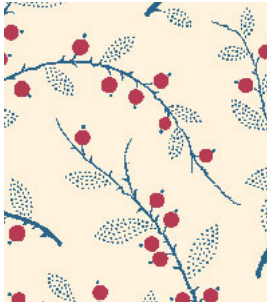
7319 P



7320 P



7322 B



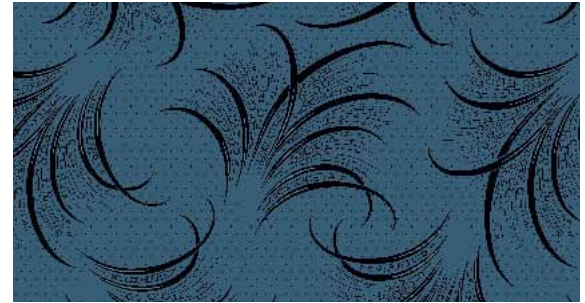
7321 R



7323 RB



7330 GK



7322 B



LADY MARY



7331 RG



7390 RB



7322 R



7321 G



7323 GN



7322 R



Download free quilt patterns www.makoweruk.com



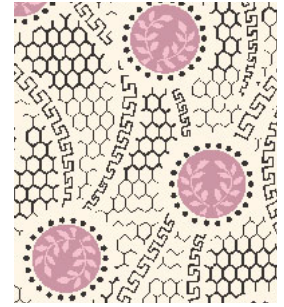
7325 B



7332 B



7324 E



7326 E



LADY SYBIL



7331 EB



7330 ET



7325 ET



7324 B



7326 B

Download free quilt patterns www.makoweruk.com



7328 B



7332 OG



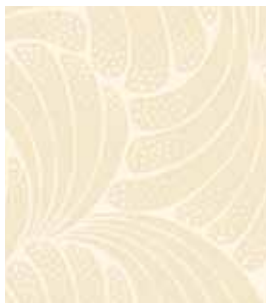
7329 B



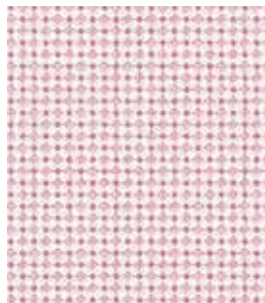
7327 B



LADY EDITH



7330 OGL



7390 BR



Download free quilt patterns www.makoweruk.com



7328 OG



7327 O



7329 O



7317 N