

Downton Abbey®

FABRICS BY KATHY HALL



Birds of a Feather Quilt Design:
Lucy Fazely

Quilt Size: 50 " x 58 "



About Downton Abbey®

In addition to the women's fabric collections, we've also included four additional patterns that are unmistakably Downton. Each companion print is colored to complement and tie together the women's collections, and sets the scene for each character, just as Downton Abbey does.

Downton™ and Downton Abbey®. ©2013
Carnival Film & Television Limited. All Rights Reserved.

andover : makower uk
The Henley Studio

Free Pattern Download Available
www.makoweruk.com

Birds of a Feather



Introducing Andover Fabrics new collection:

Downton Abbey®

Quilt design by Lucy Fazely • www.lucyfazely.com

Quilt finishes 50" x 58"

8 Hexagon Blocks: 8" x 8"

Fabric Requirements

		Yardage	Fabric
Fabric A	center	70cms	7317-N
*Fabric B	borders	1.25m	7330-GK
Fabric C	blocks, border	80cms	7330-OG
Fabric D	inner border	25cms	7320-K
Fabric E	corner squares	60cms	7331-PK
Fabric F	pieced border	60cms	7390-P
Fabric G	pieced border	60cms	7332-OG
Fabric H	middle border	70cms	7332-B
Fabric I	outer border	70cms	7318-K
Fabric J	blocks, feathers	fat 1/8 m	7322-R
Fabric K	blocks, feathers	fat 1/8 m	7322-B
20 Fat 1/8's	hexagons	fat 1/8 m each.	7318-P, 7319-K, 7319-P, 7320-P, 7321-G, 7321-R, 7323-GN, 7323-RB, 7324-B, 7324-E, 7325-B, 7325-ET, 7326-B, 7326-E, 7327-B, 7327-O, 7328-B, 7328-OG, 7329-B, 7329-O
Backing		3,30m	7332-K
*includes binding			

Cutting Directions

Note: Read assembly directions before cutting patches. All measurements are cut sizes and include 1/4" seam allowances. A fat 1/8 is a 9" x 20"-22" cut of fabric. Borders are cut the exact lengths required plus 1/4" seam allowances. WOF designates the width of fabric from selvedge to selvedge (approximately 42" wide).

Fabric A	Fussy cut (1) square 20 1/2" x 20 1/2"	Fabric G	Cut (3) squares 9 1/4", cut in half diagonally twice to make (12) quarter-square triangles
Fabric B	Cut (6) strips 2 1/2" x WOF for binding Cut (6) strips 1 1/2" x WOF, pieced to make the following: (2) side borders 1 1/2" x 56 1/2" (2) top/bottom borders 1 1/2" x 50 1/2" Cut (3) squares 9 1/4", cut in half diagonally twice to make (12) quarter-square triangles Cut (16) squares 2 3/4" for hexagons	Fabric H	Cut (2) t/b borders 4 1/2" x 44 1/2", cut crosswise and pieced Cut (2) side borders 2 1/2" x 40 1/2", cut crosswise
Fabric C	Cut (8) squares 6 1/8" Cut (8) rectangles 2 1/2" x 4 1/2" Cut (24) squares 2 1/2"	Fabric I	Cut (2) t/b borders 4 1/2" x 48 1/2", cut crosswise and pieced Cut (2) side borders 2 1/2" x 48 1/2", cut crosswise and pieced Cut (4) squares 2 3/4"
Fabric D	Cut (12) rectangles 2 1/2" x 4 1/2" Cut (4) squares 2 1/2" for border Cut (4) squares 2 3/4" for hexagons	Fabric J	Cut 4 feathers and 1 star appliqué Cut (4) squares 2 3/4"
Fabric E	Cut (4) squares 8 1/2"	Fabric K	Cut 4 feathers Cut (4) squares 2 3/4"
Fabric F	Cut (2) squares 9 1/4", cut in half diagonally twice to make (8) quarter-square triangles	20 Fat 1/8's	From each: Cut (4) squares 2 3/4"
		Backing	Cut (2) panels 33" x 58", pieced to fit quilt top with overlap on all sides

Birds of a Feather Quilt

Making the Quilt

1. Trace 8 feathers and 1 star on the paper side of fusible web, leaving about $\frac{1}{2}$ " between tracings. Roughly cut out tracings. Place 4 feather tracings web side down on wrong side of Fabric K. Place the remaining 4 feathers and the star tracings web side down on wrong side of Fabric J. Lightly fuse in place. Cut out each appliqué along marked lines.
2. Center star on Fabric A $20\frac{1}{2}$ " square. Arrange feathers around the star as shown in the quilt diagram. Fuse appliqué in place following manufacturer's directions (Diagram 1). Stitch around appliqué with a machine zigzag or decorative stitch.
3. Draw a diagonal line across the wrong side of each Fabric C $2\frac{1}{2}$ " square. Lay a marked square on one end of a Fabric D $2\frac{1}{2}$ " x $4\frac{1}{2}$ " rectangle with right sides together (Diagram 2). Stitch along marked line. Trim to $\frac{1}{4}$ " seam allowance. Press triangle out. Repeat on other end of rectangle as shown. Make a total of 12 flying geese units.
4. Sew 3 flying geese units alternating with 2 Fabric C $2\frac{1}{2}$ " x $4\frac{1}{2}$ " rectangles (Diagram 3). Make 4 borders like this. Referring to the Quilt Assembly Diagram, sew flying geese borders to the sides of the center square. Sew Fabric D $2\frac{1}{2}$ " squares to ends of remaining flying geese borders and sew to the top and bottom.
5. Make an acrylic template of the hexagon pattern. Lay 2 Fabric B $2\frac{3}{4}$ " squares right sides together. Center the hexagon template on the wrong side of top square and trace around it (Diagram 4). Stitch on the drawn line. Trim seam allowance to $\frac{1}{8}$ " to $\frac{1}{4}$ ". Cut through one layer, making a 1" slit. Turn fabric hexagon right sides out, poke out corners, and press flat. Make a total of 8 B hexagons. In the same manner, make 2 each from the 20 Fat $\frac{1}{8}$ " squares and from D, I, J, and K fabrics.
6. Following Diagram 5 for fabric placement, arrange 7 hexagons in a flower shape with the B piece as the center and the slits on the back. Note that each block is made with 6 prints from each character's fabric group as shown on the last page. Hand or machine stitch the patches together. Make 2 of each hexagon flower.
7. Referring to the block diagrams, center each hexagon flower on right side of a Fabric C $6\frac{1}{8}$ " square. Hand or machine stitch in place. Make two of each block.

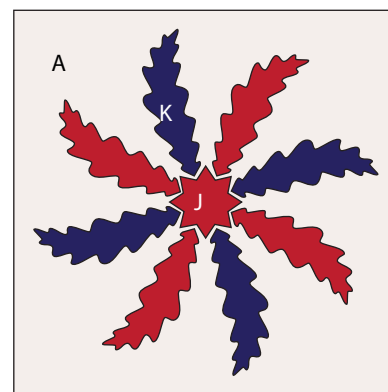


Diagram 1

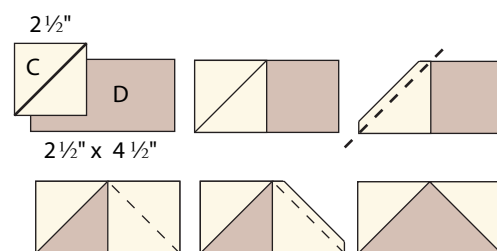


Diagram 2



Diagram 3



Diagram 4



Diagram 5

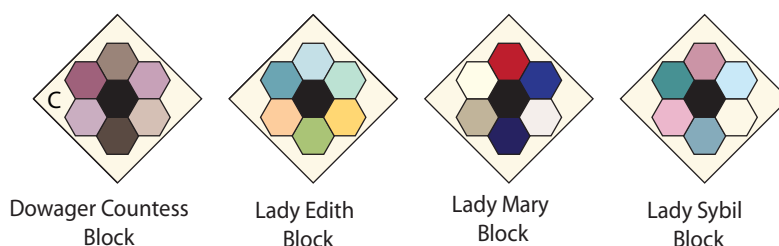


Diagram 6

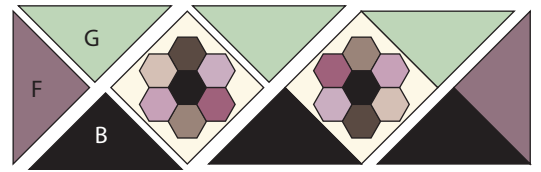
Birds of a Feather Quilt

8. Referring to the Border Diagrams, arrange the hexagon blocks (one turned 180 degrees in each border) in diagonal rows with the appropriate $9\frac{1}{4}$ " quarter-square triangles. Stitch the blocks and triangles in diagonal rows. Sew rows together. Make one of each border.
9. Referring to the Quilt Assembly Diagram, arrange the borders from Step 8 with 4 Fabric E $8\frac{1}{2}$ " squares around the Quilt Center. Sew into rows. Sew rows together.
10. Sew Fabric H $2\frac{1}{2}$ " borders to right and left sides of quilt center. Sew Fabric H $4\frac{1}{2}$ " borders to top and bottom. Sew Fabric I $2\frac{1}{2}$ " borders to sides, then $4\frac{1}{2}$ " borders to top and bottom. Stitch Fabric B $56\frac{1}{2}$ " borders to right and left sides of quilt. Add remaining borders to top and bottom of quilt

Finishing

11. Cut backing into two equal lengths. Sew the two lengths of backing together along selvedge edges creating backing. Layer the backing, batting and quilt top. Quilt or tie as desired. Bind to finish.

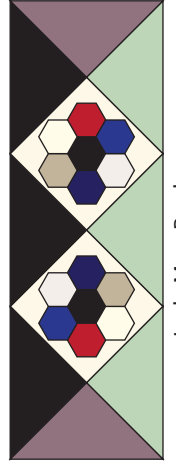
Dowager Countess Border



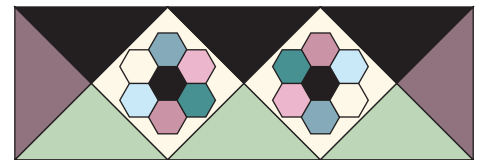
Lady Edith Border



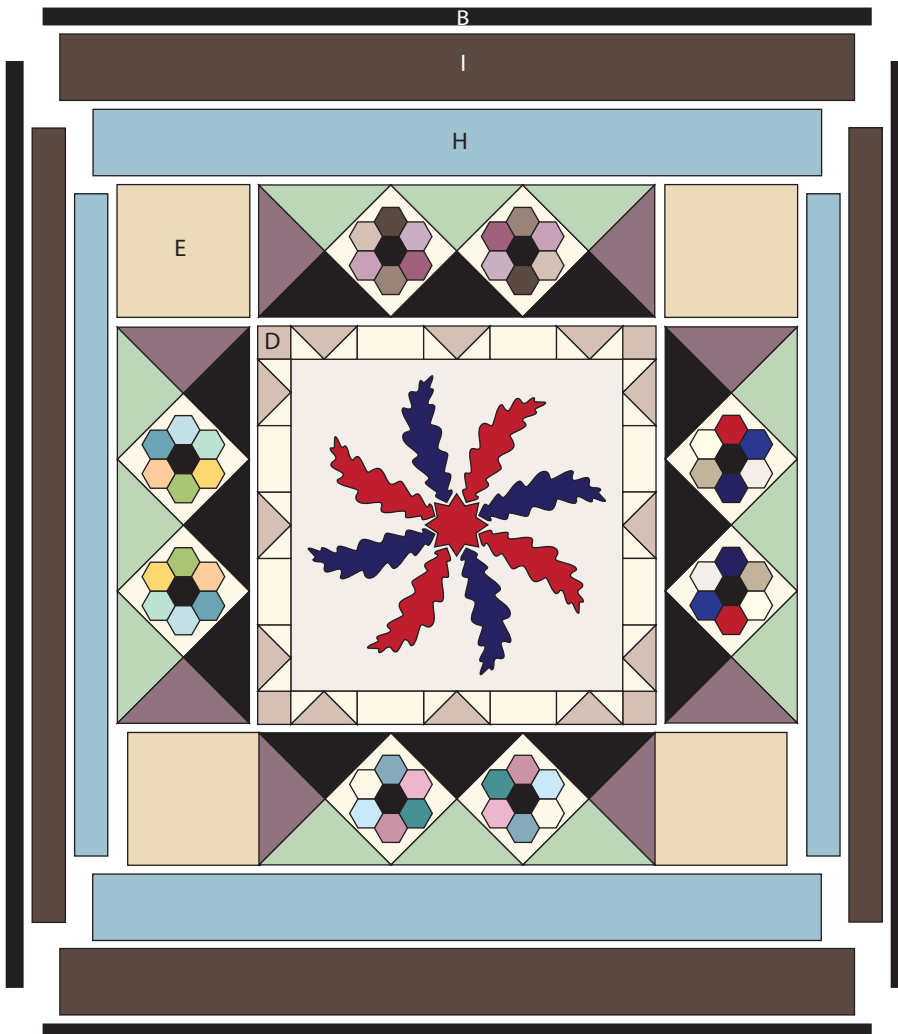
Lady Mary Border



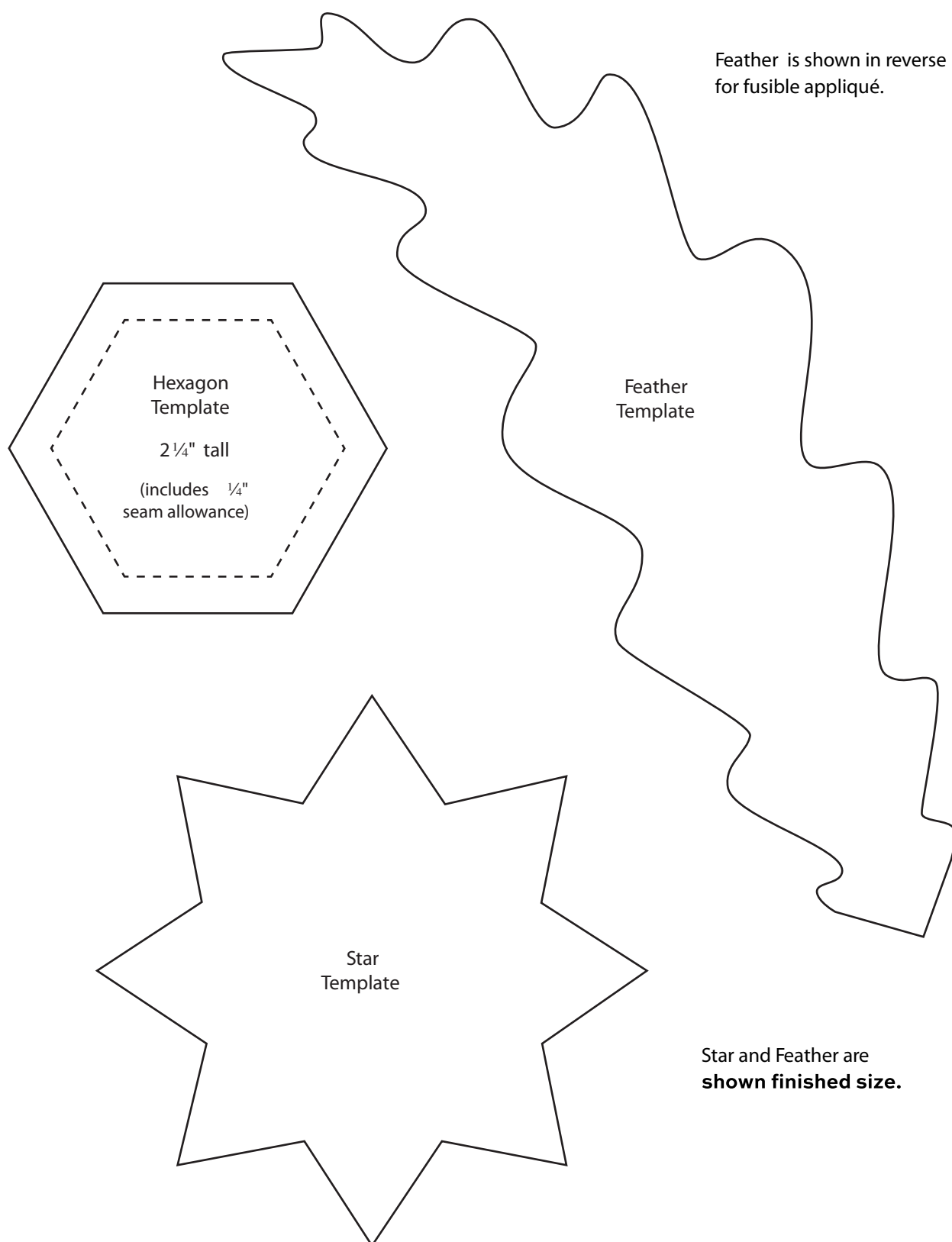
Lady Sybil Border



BorderDiagrams



Quilt Assembly Diagram





7319 K



7332 K



7320 K



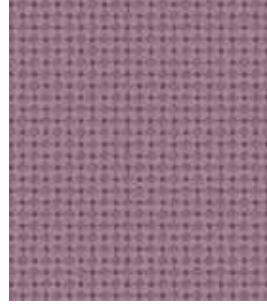
7318 K



THE DOWAGER



7331 PK



7390 P



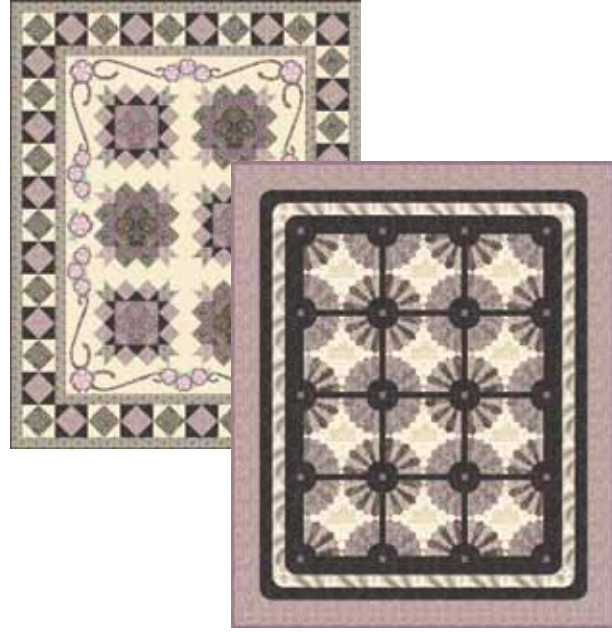
7318 P



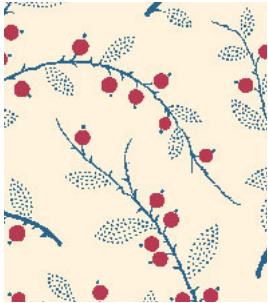
7319 P



7320 P



7322 B



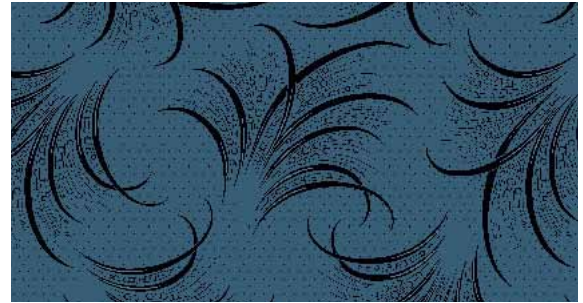
7321 R



7323 RB



7330 GK



7322 B



LADY MARY



7331 RG



7390 RB



7322 R



7321 G



7323 GN



Download free quilt patterns www.makoweruk.com



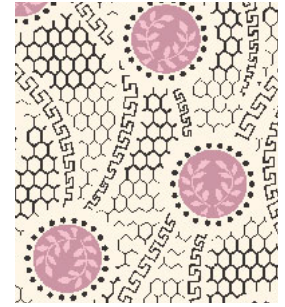
7325 B



7332 B



7324 E



7326 E



LADY SYBIL



7331 EB



7330 ET



7325 ET



7324 B



7326 B

Download free quilt patterns www.makoweruk.com



7328 B



7332 OG



7329 B



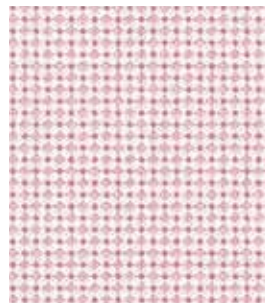
7327 B



LADY EDITH



7330 OGL



7390 BR



Download free quilt patterns www.makoweruk.com



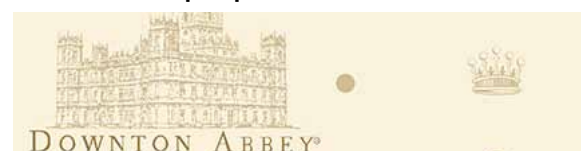
7328 OG



7327 O



7329 O



7317 N